



INNOVATION

CHAIR: SCOTT DRUMMOND, PROGRAM MANAGER, VAADA

1. A new way of commissioning: a partnership-led approach to blended AOD and mental health
2. Project ECHO: Joint Addiction and Mental Health (JAMH ECHO)- A Model for Collaboration, Education, Innovation.
3. Can a telephone-delivered intervention for methamphetamine use problems overcome barriers to treatment?

Platinum Sponsors





Project ECHO: Joint Addiction and Mental Health (JAMH ECHO)- A Model for Collaboration, Education, Innovation.

Lisa Pearson, GV Health
Sharon Hall, GVADS
Vårin Eddy, GVADS

Platinum Sponsors

Project ECHO

Joint Addiction & Mental Health (JAMH ECHO)

A Model for Collaboration, Education, Innovation

Lisa Pearson, Sharon Hall, Vårin Eddy

VAADA conference February 2023



Acknowledgement of Country



We acknowledge the traditional owners of the land on which we meet today and pay our respects to elders past present emerging.

Today we meet on the Wurundjeri land, the land of the Kulin nation

The GV Health ECHO hub usually meet on the lands of Yorta Yorta and Taungurung. However, the hub has participants from lands across Australia and New Zealand

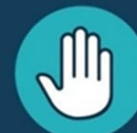
Womindjeka – Welcome

All Teach, All Learn

The Philosophy

- Collaboration
- Education – Shared knowledge
- Multidisciplinary cross sectoral community
- Diversity of practice
- Specialist input
- Subject matter experts
- Multidisciplinary network
- Brief didactics and case presentations
- Support for clinicians
- Across Australia and New Zealand

ECHO is all teach, all learn



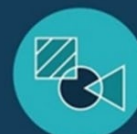
Interactive



Co-management of cases



Peer-to-peer learning

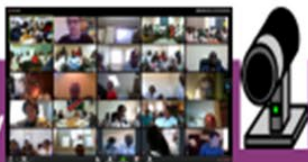


Collaborative problem solving

All Teach, All Learn

The Philosophy

1. Leverage Technology



- Multipoint videoconferencing to co-create platforms for enhanced communication and collaboration through virtual face-to-face communities of practice and learning
 - amplify scarce human resources and empower the agency of local experts

2. Case-Based Learning



- Master complexity through collaborative problem solving in all-teach, all-learn environment
- guided practice [learning by doing] via tele-mentoring

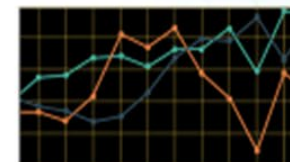
3. Sharing Best Practices



- Improve outcomes by democratizing knowledge
- Brief workshop presentations [10-20 min]
- Reinforcement of evidence-based best practices

4. Monitor and Evaluate Outcomes

- to promote continuous quality improvement



The GV Health Project ECHO

Extension for Community Healthcare Outcomes

Goulburn Valley Health's joint initiative led by Goulburn Valley Alcohol and Drug Service (GVADS) and Goulburn Valley Area Mental Health Service (GVAMHS).

- Established in 2020
- Innovative evidence-based
- Tele-mentoring model
- Inter-professional education
- Case-based learning
- Aims to democratise clinical knowledge and
- Best-practice care to people in communities that lack ready access to specialists
- Endorsed Project ECHO Hub



Aim



- Lead, grow and replicate
- Support health care providers
- Connect specialists to rural multidisciplinary primary care providers
- Improve access to care within a person's own community

JAMH ECHO – A Collaboration

Joint Addiction and Mental Health

The original GV Health ECHO project was

JAMH ECHO

Bringing together mental health and addiction medicine specialists to deliver an integrated program for primary care providers.



The Bigger Picture



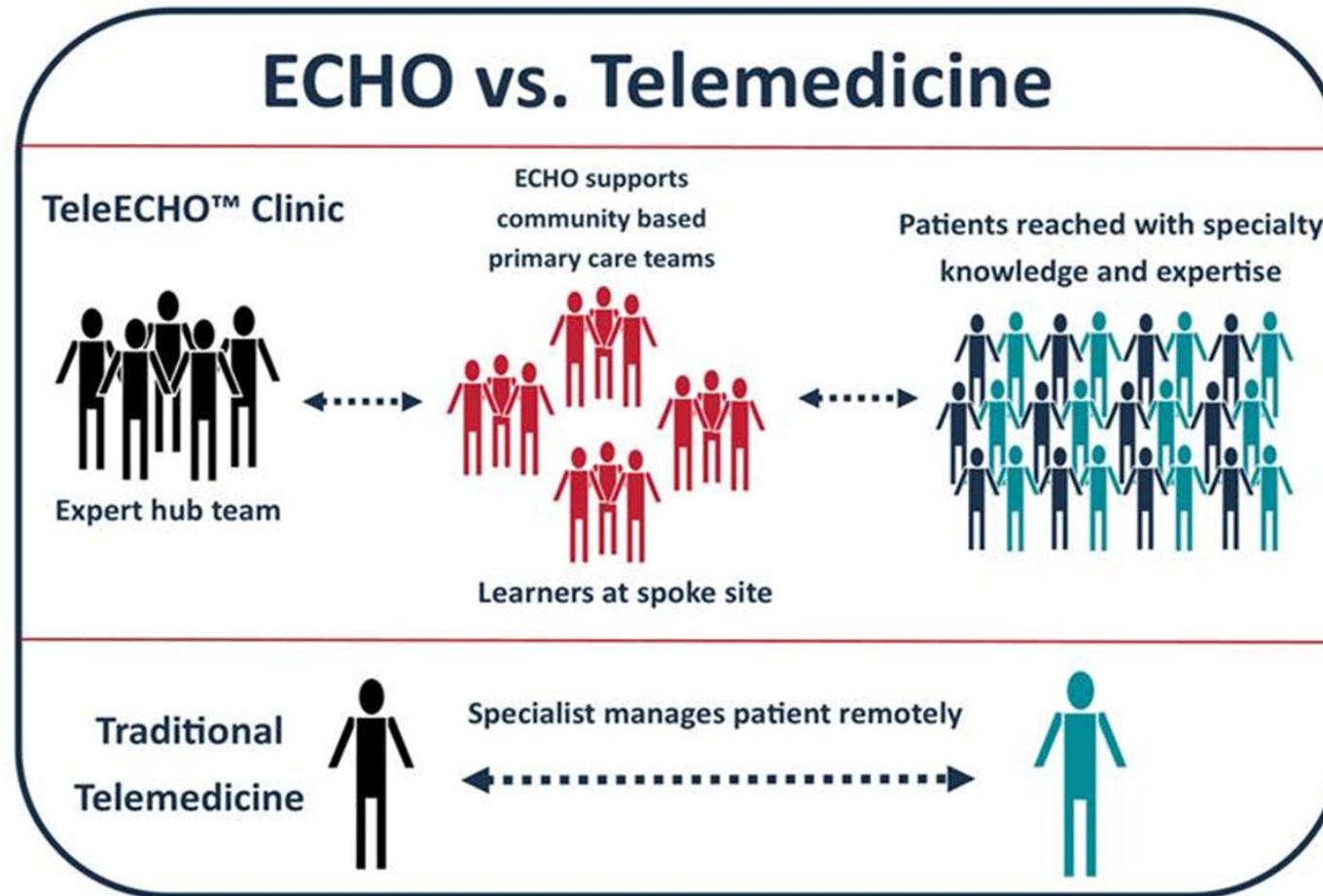
Project ECHO supports GV Health's Strategic Plan and vision to become a leader in integrated training in mental health and addiction medicine

This model aligns with the Royal Commission into Victoria's Mental Health System (RCVMHS)

The members of this community of practice represent diverse populations and organisations from across Australia and New Zealand

ECHO vs Telemedicine

What is the difference?



Vision for the future



The Project ECHO model advances the Royal Commission's vision for the future:

- To provide a valuable resource for rural and regional communities
- To deliver services to small and geographically isolated rural communities

Objectives

- Deliver a new model of care that can be replicated
- Facilitate and build collaboration
- Engagement across the workforce
- Provide access to specialist resources
- Education on contemporary best practice
- Brief didactics and case-based learning

Objectives continued



- Promoting integrated treatment, care and support
- Address geographic disparities and barriers
- Strengthen relationships between the primary health network and hospitals
- Build workforce competency and confidence to deliver best practice care
- Strengthening multidisciplinary networks

Improve outcomes for people living with mental illness and substance use

Collaboration

Mental Health and Addiction

GV Health employs one of only 2 addiction medicine specialist in public practice in rural Victoria (2 days)

The collaboration between GVADS and GVAMHS provides an opportunity to leverage scarce knowledge and promote workforce development:

- Psychiatric registrars and graduate nurses supported to deliver case presentations
- Increased collaborations with rural health services
- GVADS has experienced an increase in referrals, requests for advice and secondary consultation
- Increased awareness of the inter relationship of ADHD and SUD
- Isolated rural nurse practitioners receiving formal and informal supports from AMS
- Project ECHO and JAMH ECHO has generated networks beyond the ECHO sessions
- Increased links with rural AOD services

JAMH ECHO is held weekly

Results and Outcomes for 2022

Themes
Young People and Drugs
Borderline Personality Disorder
Forensic Mental Health and Substance
JAMHS Greatest Hits- Back by Popular Demand

451 different
clinicians

2,001 total
attendances

48.8 attendees
per clinic session

41 Clinics
(41.02) hours

41 case
presentations
for 40 individual
patients

41 Didactics by
34 individual
presenters

Conclusion

Best Possible Outcomes

JAMH ECHO is creating a shared treatment paradigm to ensure that clients of both mental health and AOD services receive the holistic care needed to create the best possible outcomes.

A message from Dr. Sanjeev Arora

Director and Founder of Project ECHO



References

ECHO Institute <https://hsc.unm.edu/echo/>



Questions?

Register - Lisa.pearson@gvhealth.org.au or
JAMHECHO@gvhealth.org.au